

USC Shoah Foundation

The Institute for Visual History and Education



GLOBAL HEADQUARTERS

Autumn 2018

LETTER FROM STEPHEN SMITH



I'm thrilled to report that we are now settling in to our new home on the fourth floor of USC's Thomas and Dorothy Leavey Library.

With leadership gifts from longtime supporters George and Irina Schaeffer and Board of Councilor member Melinda Goldrich and her sister Andrea Cayton, along with the Goldrich Family Foundation, the new location considerably expands the Institute's space and technological capabilities.

Designed by award-winning architect Hagy Belzberg, whose work includes the Los Angeles Museum of the Holocaust, our new headquarters incorporates the Institute's programs into a single space with global reach – a museum of living history that also functions as a vital center for research, education and communication to build human understanding.

From this powerful new hub, we are able to engage a broad global audience and create a vibrant workplace in order to be a dynamic, visible destination where the team and our visitors can come together.

With natural light flowing in and surrounded by views of the campus and Los Angeles, the new spaces features an open layout fostering both formal and informal collaborations among staffers,

scholars, and researchers, enabling people to appreciate – and join in – the range of activity.

In addition to offices, the expanded facilities include a new studio for recording testimonies; multimedia classrooms and study labs; conference suites; a lounge; a centrally located kitchen; and, of course, the Institute's powerful exhibits. A visitor's area employs virtual reality, interactive content and visuals to support the important meetings that occur there.

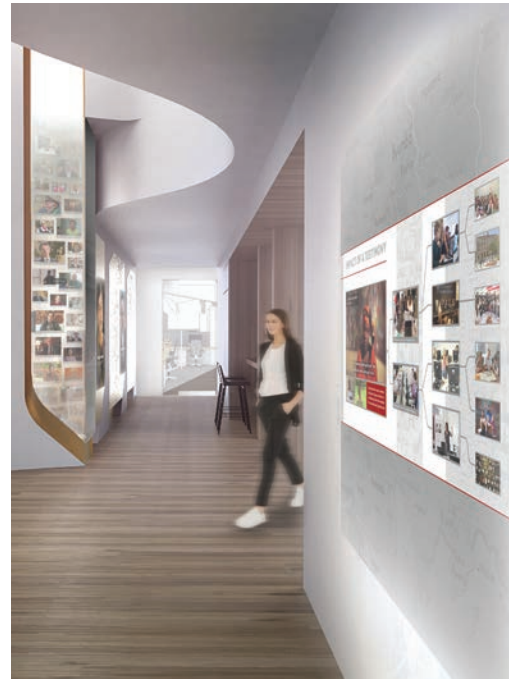
It is extraordinary to have the support of our community rallying around our new home. Several of the spaces have received support, and a range of naming opportunities remains available. My thanks to all who have contributed to make our new home a reality.

Of course, the heart of the Institute will always be those who work, visit and learn here. Please come for a visit!

Stephen Smith, PhD
Executive Director
Andrew J. and Erna Finci Viterbi Endowed Chair
UNESCO Chair on Genocide Education
Adjunct Professor of Religion

OUR VISITOR'S CENTER

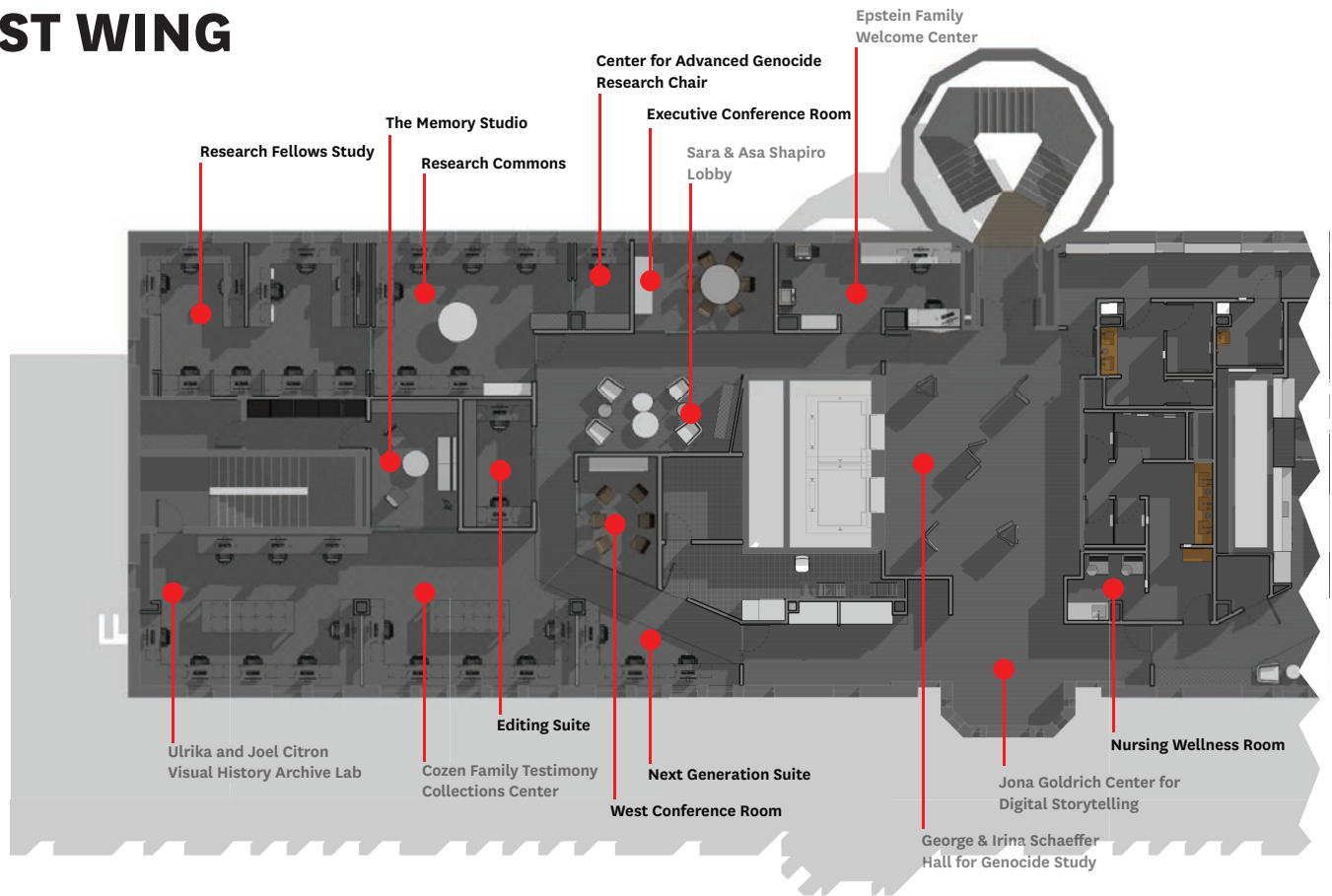
Jona Goldrich Center for Digital Storytelling



George and Irina Schaeffer Hall for Genocide Study



WEST WING



Epstein Family Welcome Center (funded)

Designed to invite curiosity, the Welcome Center will serve as the first stop of a visitor's journey into USC Shoah Foundation's global headquarters.

Next Generation Suite

Re-energized by a cohort of new interns from across the USC campus each semester, this suite engages the next generation of scholars to advance the work of the Institute.

Nursing Wellness Room

The Nursing Wellness Room will offer working mothers a private and comfortable space to accommodate their needs.

Cozen Family Testimony Collections Center (funded)

The New Collections Center will give survivors and other witnesses a voice as the Institute continues to collect and preserve testimonies from around the world.

Editing Suite

A state-of-the-art Editing Suite enables on-site storytelling inspired by testimony, from "Connections" videos for IWitness to full-length documentary films for broadcast.

The Memory Studio

Outfitted with cutting-edge recording, display, and immersive technologies, The Memory Studio powers creative exploration of new storytelling and learning experiences.

Research Commons

The hub of the Center for Advanced Genocide Research, the Research Commons offers a home for scholars on campus and from around the world to pursue testimony-based academic study.

Ulrika and Joel Citron Visual History Archive Lab (funded)

Inside the Visual History Archive Lab, thought leaders examine potential new collections and explore new ways to use testimony for the benefit of humanity.

Research Fellows Study

Hosting world class scholars from around the globe, the Research Fellows Study will provide best-in-class resources for academic engagement with testimony.

Center for Advanced Genocide Research Chair

The Center for Advanced Genocide Research Chair provides dedicated space for the director of the Center to lead research on the circumstances and resistance to genocide.

Executive Conference Room

Equipped with cutting-edge technology, this multi-purpose space serves as both an executive meeting room and a Virtual Reality "play-space" to engage with new media.

West Conference Room

The high-technology West Conference Room will provide an intimate space for guests to confer and strategize.

Jona Goldrich Center for Digital Storytelling (funded)

Conveying our mission and methodology, this reception area will introduce visitors to interactive digital storytelling.

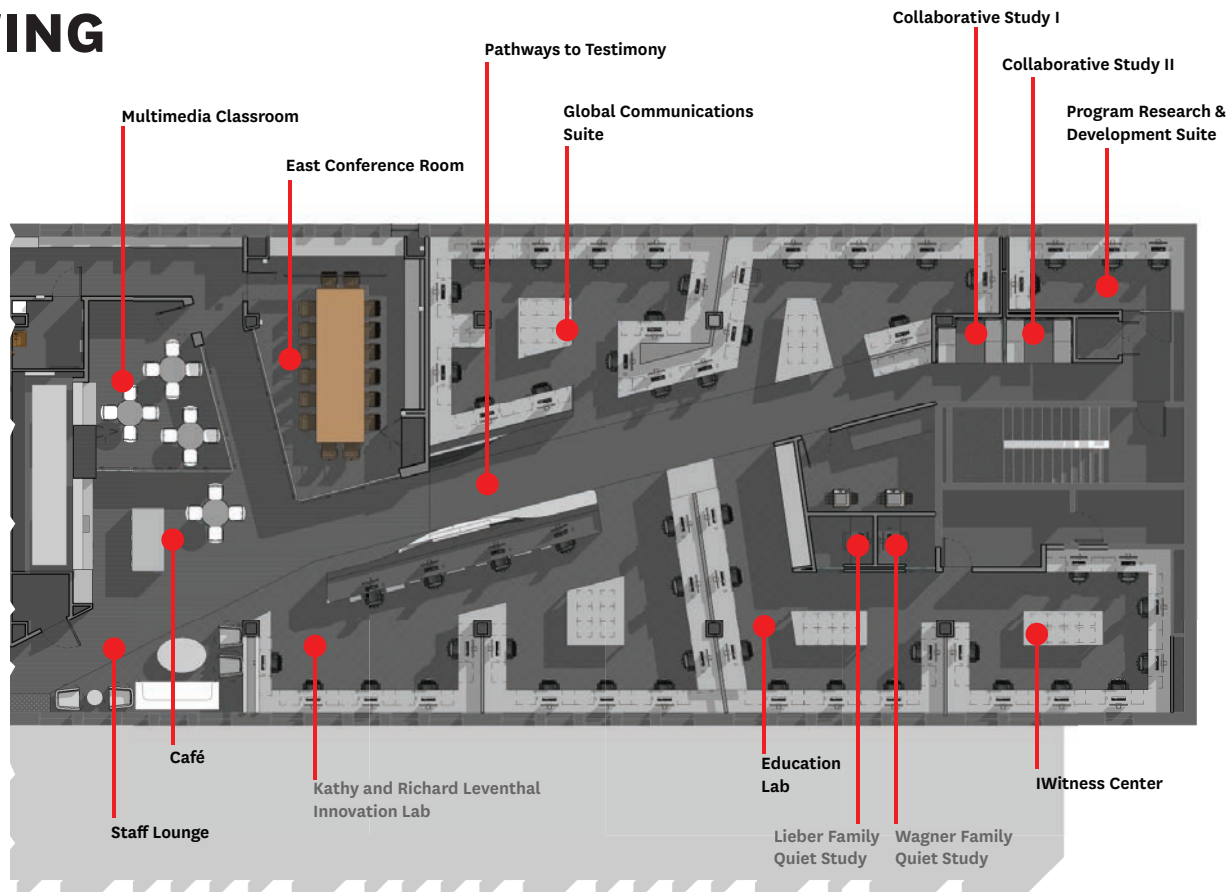
George and Irina Schaeffer Hall for Genocide Study (funded)

Connecting visitors to the power of testimony, this central hall will pay tribute to the Institute's mission and to the witnesses who have shared their stories with us.

Sara and Asa Shapiro Lobby (funded)

A quiet reception and rest area, this space provides space for guests and visitors to prepare for a visit or to debrief from one.

EAST WING



Lieber Family Quiet Study (funded)

The Quiet Study area provides scholars, visitors, and staff with flexible, private space for work requiring focused concentration.

Wagner Family Quiet Study (funded)

The Quiet Study area provides scholars, visitors, and staff with flexible, private space for work requiring focused concentration.

Collaborative Study I

Located within the Strategic Operations center, this team breakout space will enable staff, partners, and educators to work collaboratively.

Collaborative Study II

Located within the Strategic Operations center, this team breakout space will enable staff, partners, and educators to work collaboratively.

Café

The Café will offer staff and guests an area for communal gathering and refreshment, further enhancing the sense of community on which the Institute prides itself. The Café is located within the convertible “town hall” space that combines the Café with the Multimedia Classroom and the East Conference Room.

Staff Lounge

The Staff Lounge will serve as the primary gathering place for staff and volunteers alike, an impromptu meeting space for casual conversations, shared meals, or an afternoon cup of coffee.

East Conference Room

This technologically advanced demonstration and meeting space will serve as a multi-function suite for staff and visitors, located within the convertible “town hall” space that combines the East Conference Room with the Café and Multimedia Classroom.

Education Lab

Demonstrating the proven success of the Institute’s programs, the Education Lab will allow visitors to engage all current and future testimony-based experiences.

Program Research & Development Suite

The Collaborative Study will connect visiting partners and thought leaders from across the Institute in dedicated collaborative work.

Kathy and Richard Leventhal Innovation Lab (funded)

The Kathy and Richard Leventhal Innovation Lab will provide a space for the Institute’s Media Production team, bridging global outreach initiatives with innovative technological platforms.

Pathways to Testimony

Designed to showcase works inspired by the Visual History Archive, the interactive Pathways to Testimony Exhibit enables guests to see, hear and feel the influence of testimony.

IWitness Center

Generating testimony-based learning experiences for students and educators around the world, the IWitness Center expands the influence of testimony in teaching.

Global Communications Suite

The Global Communications Suite transmits the Institute’s content and messages to global audiences.

Multimedia Classroom

Showcasing the Institute’s advanced educational content, the Multimedia Classroom will immerse students and others in new forms of learning, located within the convertible “town hall” space that combines the Multimedia Classroom with the East Conference Room and the Café.

Consider making a gift for our new home

Named gifts are lasting reminders to future generations of the remarkable and generous contributions by USC Shoah Foundation's most generous donors, families and partners, and create permanent funding resources to drive our mission forward. For this reason we are pleased to offer numerous naming opportunities within our Global Headquarters.

USC Shoah Foundation welcomes the opportunity to honor those whose generous philanthropic contributions make possible the construction of our state-of-the-art Global Headquarters.

USC Shoah Foundation thanks all our donors and recognizes that through these extraordinary contributions, our supporters have demonstrated their commitment and dedication to creating a more tolerant world by using testimony in education, scholarship, and research by providing significant financial support.

For more information, please contact:

Andrea Waldron
213-740-6051
waldrona@usc.edu